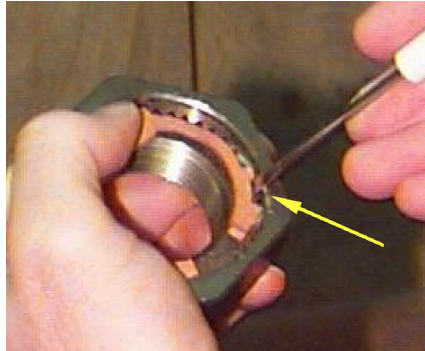


448-4836/448-4837 Keeper Removal Procedure



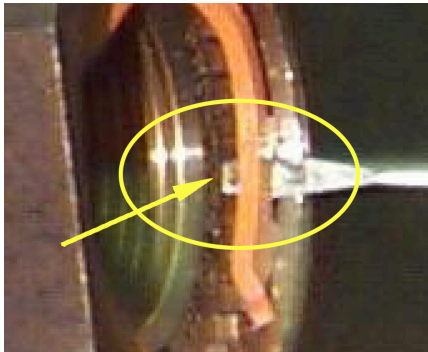
1. Hold the ProTorq nut assembly firmly in one hand. Locate the thumb over the tab/Dflat feature.



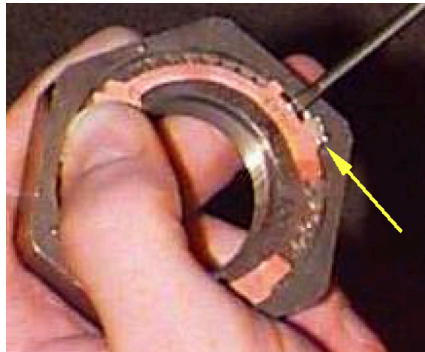
2. Place the blade of a flathead screwdriver in the slot located on the keeper leg.



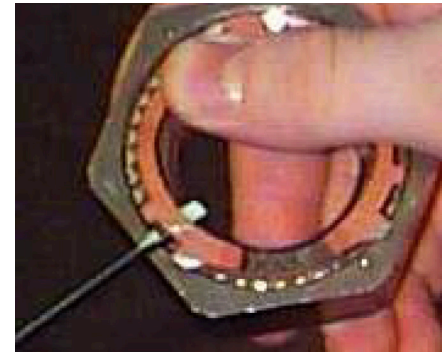
DO NOT place the blade of the screwdriver in any other location along the keeper leg.



3. Work the blade of the screwdriver past the keeper leg, until it is in contact with the nut. This can be accomplished by prying on the screwdriver while moving it back and forth. Make sure the blade is in contact with the surface (as shown below), not the nut teeth.



4. Pry the keeper leg until it is out of the nut groove.



5. Change hands and repeat to remove the other keeper leg. Be sure to hold the keeper firmly with the thumb. This will prevent the keeper from springing out of the nut towards the user once the second leg is removed.