

HIGHLY ADAPTABLE FOR MAXIMUM EFFICIENCY

Patented design increases simplicity and safety. STEMCO® QWIKTIE® tie rod assembly offers a highly adaptable solution that can accommodate over 80% of straight tie rod lengths with just two part numbers.

PATENTED TECHNOLOGY

QWIKTIE's versatile range of adjustment makes it a flexible stock addition. QWIKTIE tie rod assemblies are highly adjustable to fit over 80% of the straight tie rod lengths and styles in the market. QWIKTIE features easy color attributes for identification and accurate installation.

INCREASED VERSATILITY

With a versatile tie rod solution, QWIKTIE tie rod assemblies reduce overhead for maximum efficiency. QWIKTIE fits from 57 ³/₈" to 73 ⁷/₈" total length from grease zerk to zerk.

INCREASED STRENGTH

Increased strength and a more even clamping force holds the alignment longer, reducing stress on other suspension components providing increased fuel mileage and tire life.

GREATER ACCURACY

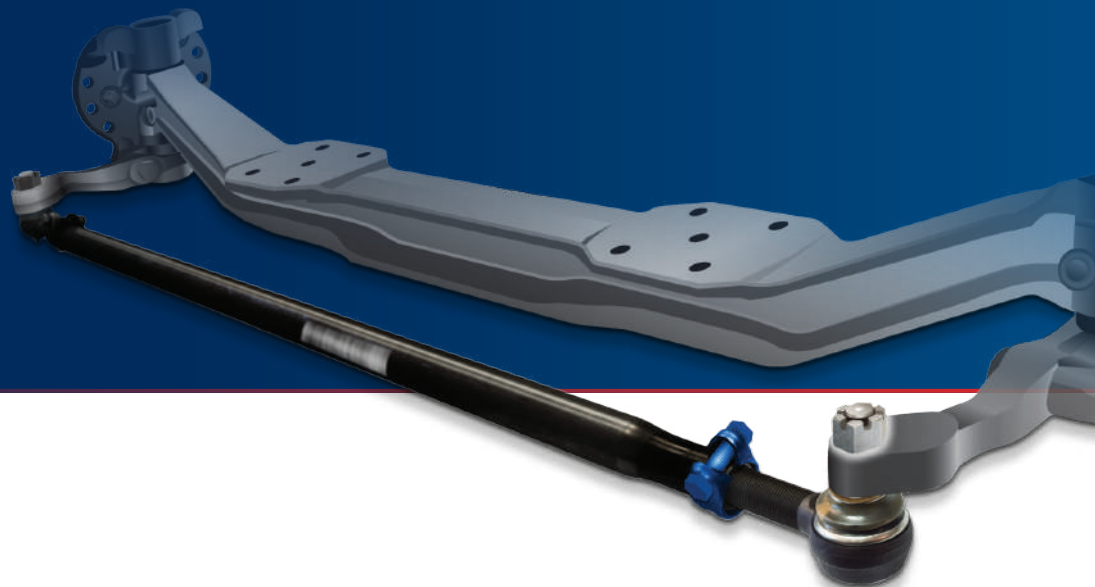
Finer threads provide a more precise adjustment, reducing stress on other steering components. Threads are pre-lubricated for ease of installation and easy adjustment over time.

SAFE AND SECURE

Alignment settings are easily adjusted in a timely manner to achieve a safe, secure connection between the tie rod and threaded tie rod end.

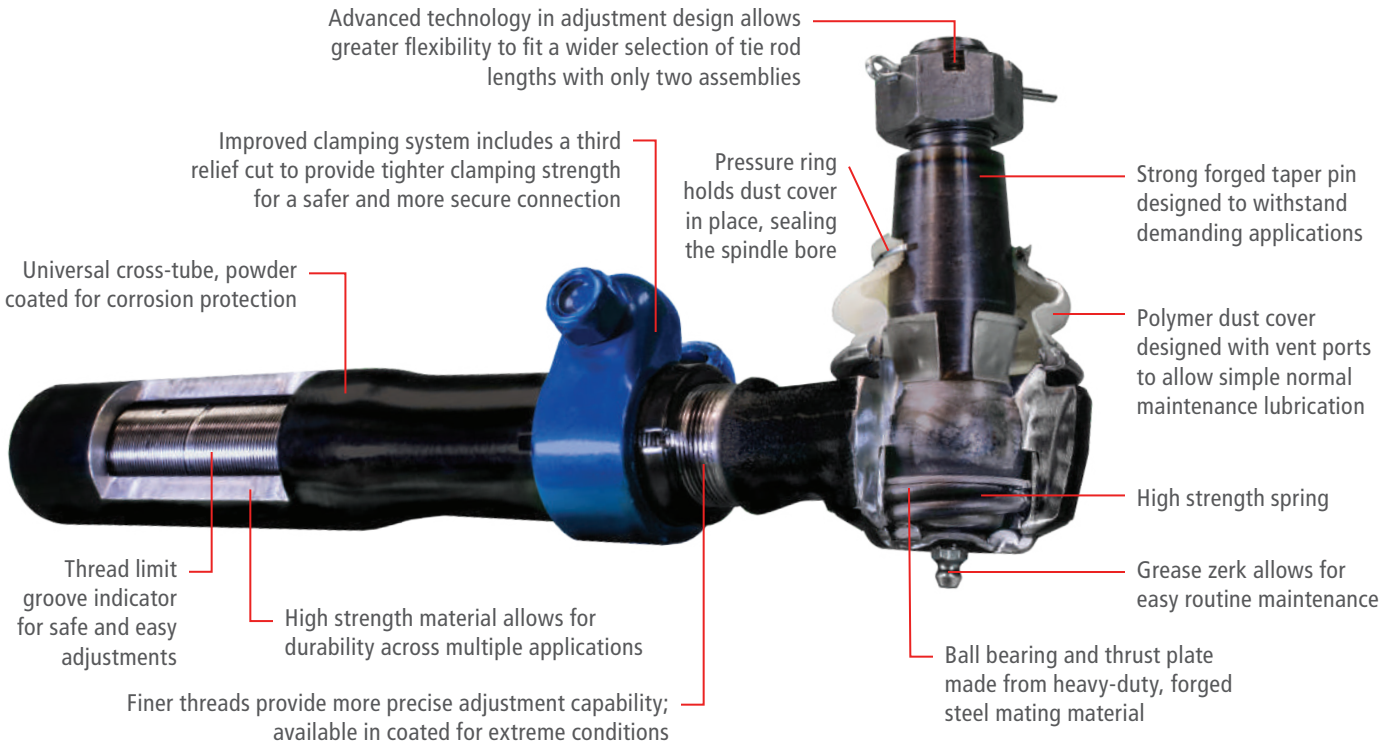
SEVERE APPLICATIONS

STEMCO now offers coated QWIKTIE tie rod assemblies featuring plated threads to further extend the life of the tie rod, even in extreme environments.



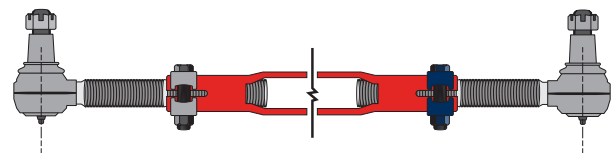


The QWIKTIE tie rod assembly offers a highly adaptable solution that can accommodate a wide range of tie rod lengths. Increased clamping and tube strength allows it to hold alignment, reducing stress on other suspension components.



QWIKTIE Tie Rod Assembly Part Numbers

QWIKTIE PART NO.	TIE ROD END INDUSTRY STD. REFERENCE NUMBER	AXLE CODE	KING PIN
QT967SS, QT967SS- Coated	ES3219L, ES3220R	FF-961, FF-966	K961L
	ES423L, ES423R	FF-981, FF-986	K981R
	ES9001L, ES9001R,	02-ADD	K120I
QT108SB, QT108SB- Coated	ES431L, ES431R	FL-931, FL-941	KH931L
	ES9328L, ES9329R	E1462I/W	K147E
	ES431L, ES431R	EFA18F3, EFA20F4	K180E



Increased range adjusts to fit over 80% of tie rod assembly lengths in the market (57 3/8" to 73 7/8").

This table captures example cross references to a QWIKTIE tie rod assembly. For any given axle or tie rod end, there can be many possible combinations of cross-tube lengths. For example, there could be as many as 40 different assemblies using the ES423L tie rod end. For a complete list of cross-tube lengths, visit STEMCO.com.

UNITED STATES | 800-527-8492 | 903-758-9981
 300 Industrial Drive
 Longview, Texas 75602 | US

4641 Industrial Drive
 Millington, Michigan 48746 | US

CANADA | 877-232-9111 | 905-206-9700
 1020 Lorimar Drive
 Mississauga, ON L55 1R8 | Canada

MEXICO | 444-804-1736
 Eje Central Sahop No 215, Zona Ind
 San Luis Potosi SLP 78395 | Mexico

AUSTRALIA, NEW ZEALAND, PAPUA
011-61-2-9793-2599
 2/198 Walters Road
 Arndell Park NSW 2148 | Australia



Learn more at stemco.com