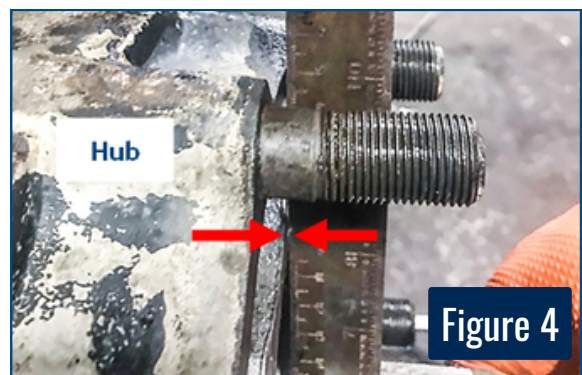
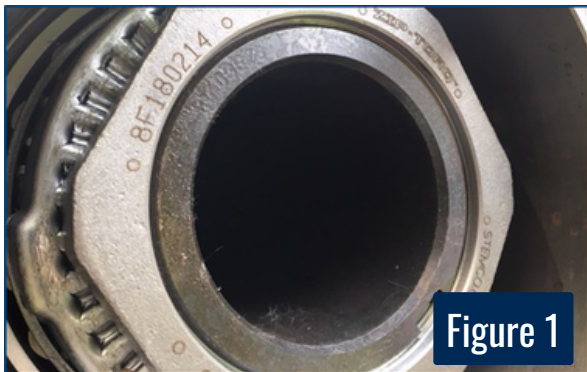


ZIP-TORQ® & AUTO-TORQ® COMPATIBILITY CHECK

On some applications, both the Zip-Torq® and Auto-Torq® axle fasteners may protrude past the end of the spindle. Always check endplay to ensure proper bearing adjustment. If proper endplay is not achieved after following all installation instructions, please refer to Tech Tip #123. The Zip-Torq® or Auto-Torq® should not protrude more than 1/8" past the end of the spindle (as shown in Figures 1 & 2).

For drive axle applications, in addition to the above check, make sure the Zip-Torq® or Auto-Torq® does not contact the axle shaft flange by following the below steps after completing the recommended bearing adjustment:

1. Place a straight edge across the hub face
2. If the straight edge does NOT contact the Zip-Torq® or Auto-Torq®, then the axle fastener can be used (See Figure 3)
3. If the straight edge contacts the Zip-Torq® or Auto-Torq®, remove the axle fastener and replace with a Pro-Torq® (See Figure 4)



If you have any further questions, please contact your local STEMCO representative.

UNITED STATES
 800-527-8492 | 903-758-9981
 300 Industrial Drive
 Longview, Texas 75602 | US
 4641 Industrial Drive
 Millington, Michigan 48746 | US

CANADA
 877-232-9111 | 905-206-9700
 1020 Lorimar Drive
 Mississauga, ON L5S 1R8 | Canada
MEXICO | 444-804-1736
 Eje Central Sahop No 215, Zona Ind
 San Luis Potosi SLP 78395 | Mexico

AUSTRALIA, NEW ZEALAND, PAPUA
 011-61-2-9793-2599
 2/198 Walters Road
 Arndell Park NSW 2148 | Australia

